

# Planned Care Update

Adults & Health Scrutiny Board 12th July 2021

**Sharon Martin**

Executive Chief Operating Officer

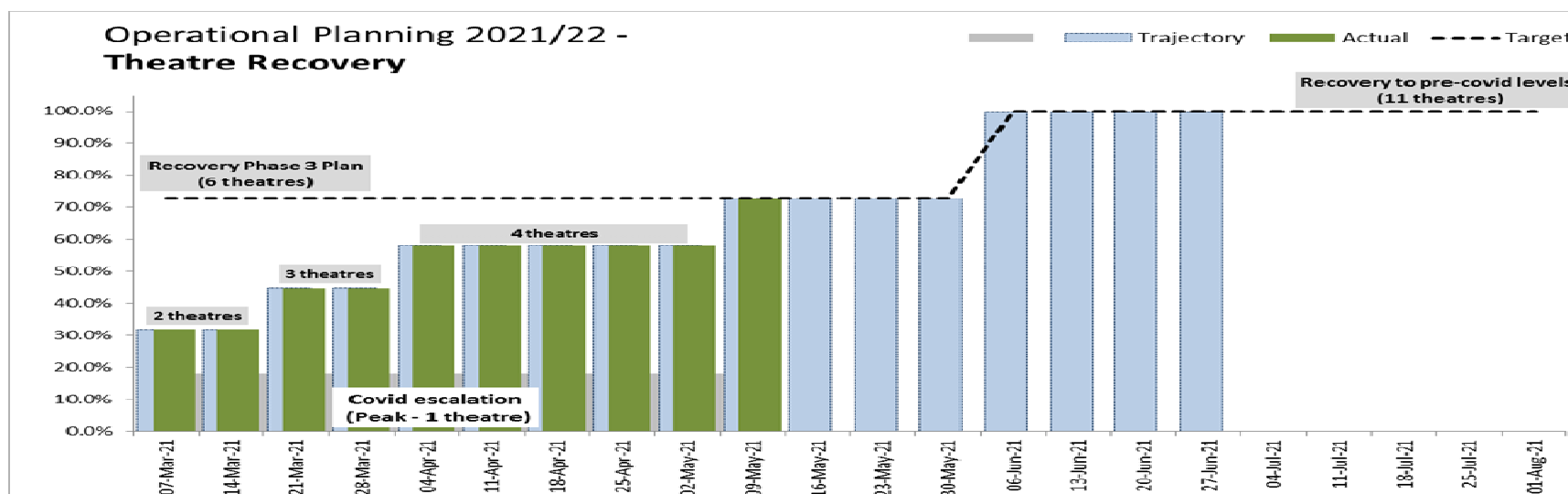
University Hospitals of Derby & Burton NHS Foundation Trust



# Planned care restoration & recovery update

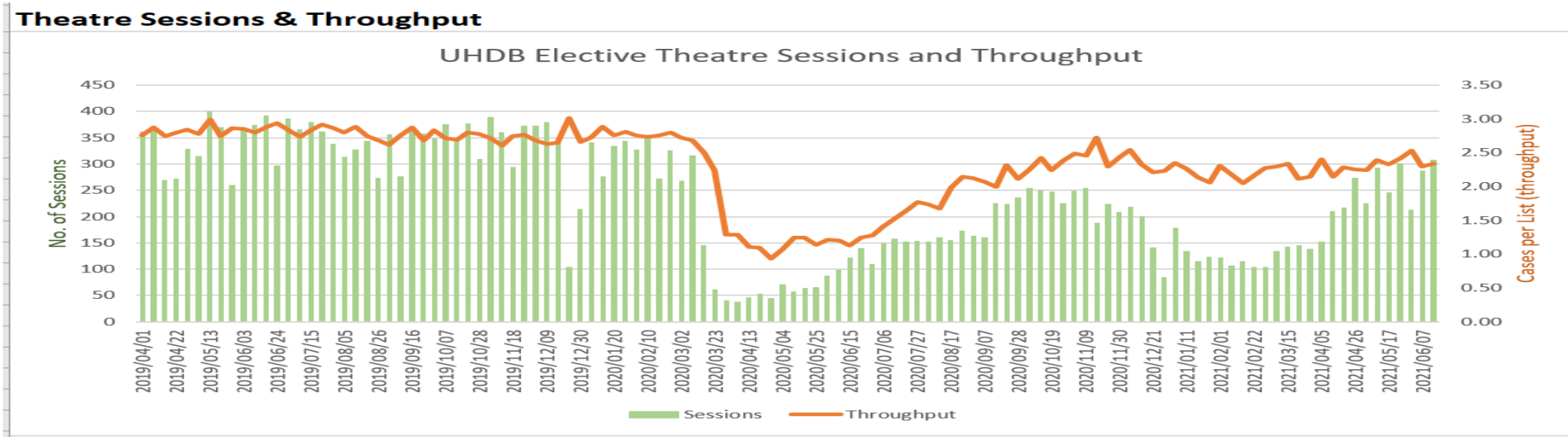
- Supporting the recovery of our workforce remains our top priority, given the importance of their health and wellbeing and the impact this has on our ability to deliver our restoration and recovery plans.
- We continue to consistently operate processes both to clinically prioritise treating our patients and for reviewing patients and managing harm.
- We continue to maximise the use of our NHS and independent sector capacity to recover as quickly as possible.

# Recovery Plan - CRH



- CRH opened a further 2 theatres in May returning to Phase 3 recovery levels – 6 theatres.
- Recovery to pre-Covid levels for June returning back to 11 Theatres although impacted upon by staff sickness
- Medicine Division will continue with improvement work on ALoS and SDEC capacity to allow a ward to be allocated to Surgery from June to October to support recovery.
- CRH theatre capacity aims to recover to pre-Covid levels by end June 2021, if the level of Covid ICU is held at 4 beds. CRH experienced a higher covid ICU conversion – an average of 25% -30% in the last peak of Covid (region less than 20%), if this trend continued in a 3<sup>rd</sup> peak this would impact on elective capacity as staff (now trained) would be reallocated to support the surge resulting in fewer theatres being open.
- To date Covid ICU numbers remain below 4, it is anticipated that during the next few weeks recovery towards the phase 3 levels of activity is achievable.

# Recovery Plan - UHDB

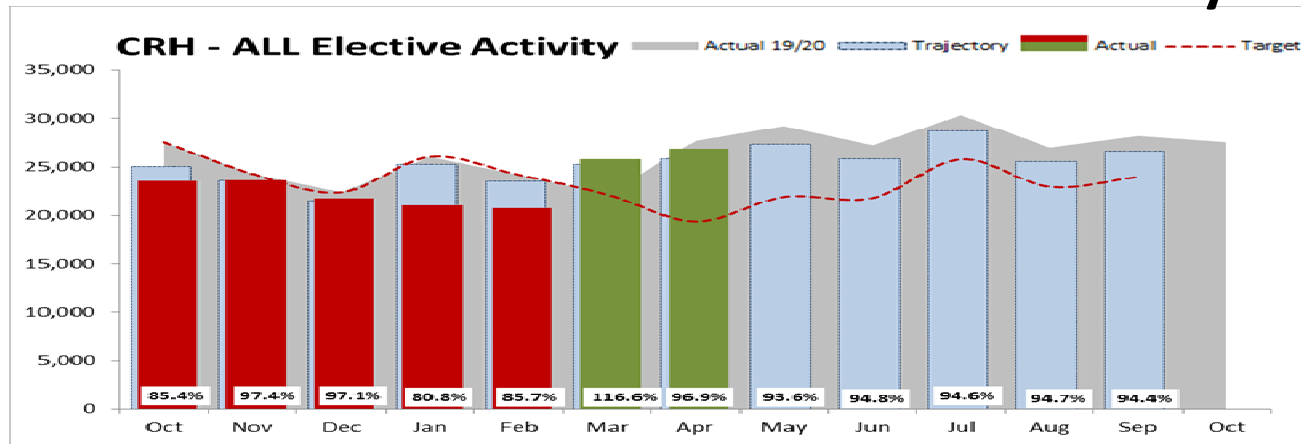


- UHDB covers the population of SE Staffordshire through Queens Hospital in Burton and the 2 Community sites at Tamworth and Lichfield, and the Derbyshire population from the Royal Derby site and Community Hospitals. RDH also operates a number of services at a regional level (bariatrics, Oral Maxillofacial surgery) and attracts referrals from out of area for services such as Hand Surgery.
- UHDB theatre sessions aims to recover to pre-Covid levels 5<sup>th</sup> July 2021, if the level of ICU is held at 6 beds. Urology DC is due to be re-instated by the end of June which will improve DC activity levels at RDH.
- Theatre staff have been targeted at supporting clinical priorities (P2 and P3) in Q1.
- Some areas have previously utilised weekend lists as part of their core capacity (particularly in Orthopaedics). It is very difficult to re-instate weekend lists currently due to lack of theatre staff and the need to allow staff to recover.

# Current Plan

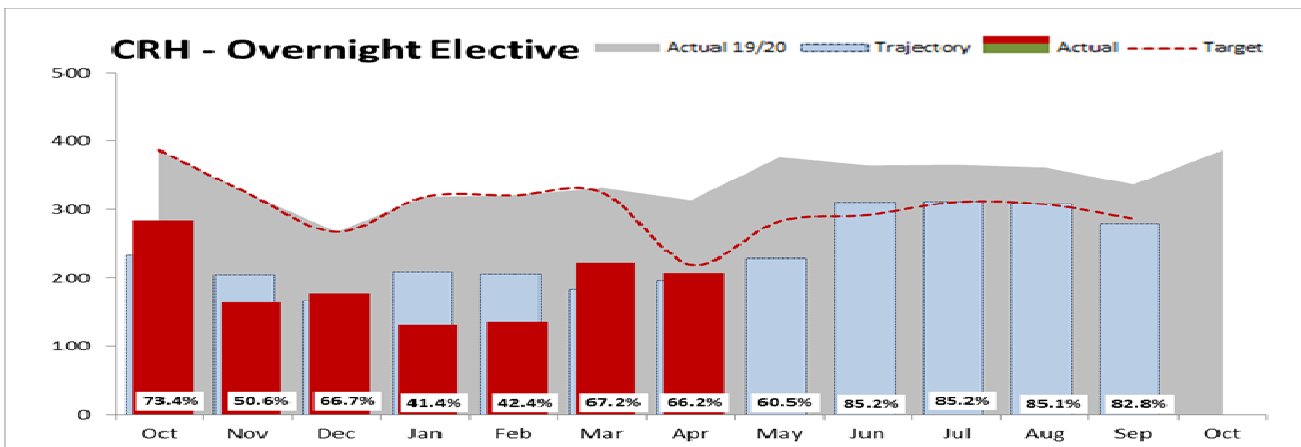
## CRH Elective Recovery

Joined Up Care  
Derbyshire



All Elective Care Activity position is **26.9% above target**, this is 3.6% above the trajectory set for April 2021

ALL ELECTIVE	Apr-21	May-21	Jun-21	Jul-21	Aug-21	Sep-21
Target	70.0%	75.0%	80.0%	85.0%	85.0%	85.0%
Trajectory	93.3%	94.0%	94.9%	94.7%	94.7%	94.5%
Actual (vs Trajectory)	96.9%					
Variance (Actual vs Target)	26.9%					



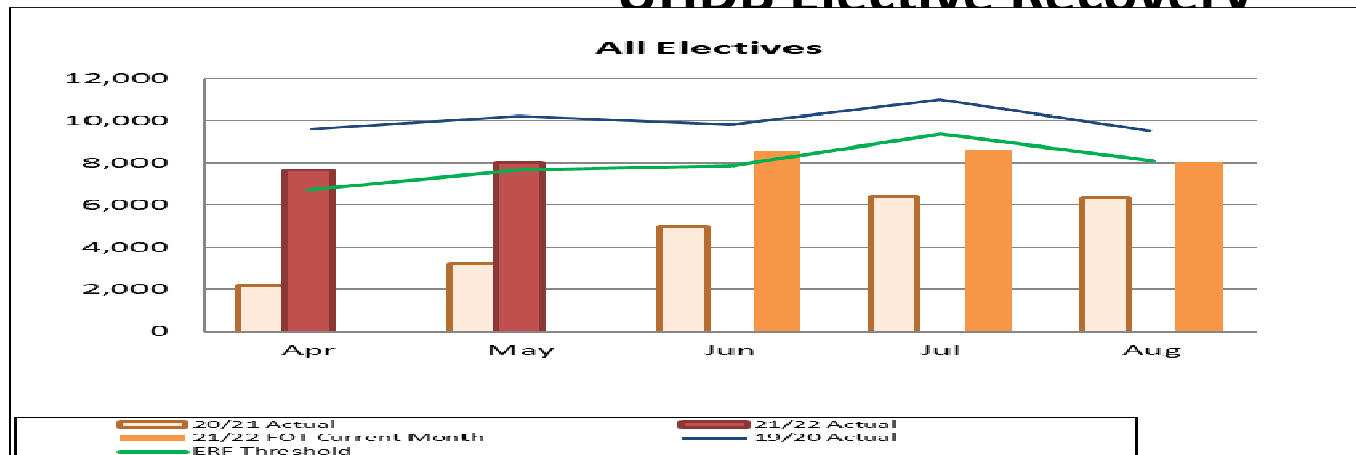
Elective position is **3.8% below target** and 4.2% above the trajectory for April 2021

OVERNIGHT ELECTIVE	Apr-21	May-21	Jun-21	Jul-21	Aug-21	Sep-21
Target	70.0%	75.0%	80.0%	85.0%	85.0%	85.0%
Trajectory	62.4%	60.5%	85.2%	85.2%	85.1%	82.8%
Actual (vs Trajectory)	66.2%					
Variance (Actual vs Target)	-3.8%					

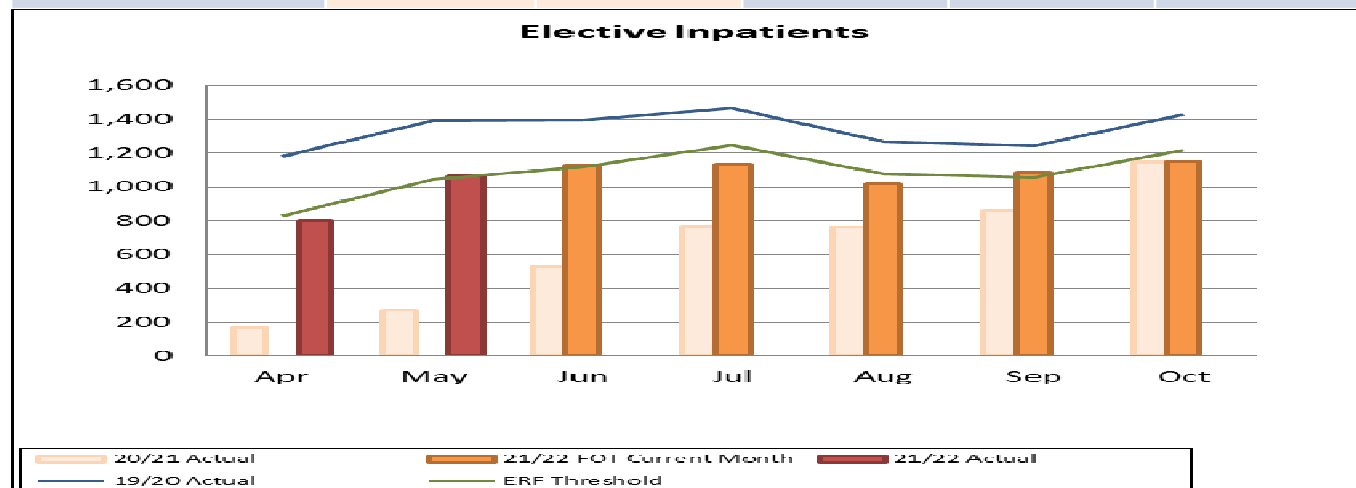
# Current Plan

## UHDB Elective Recovery

Joined Up Care  
Derbyshire



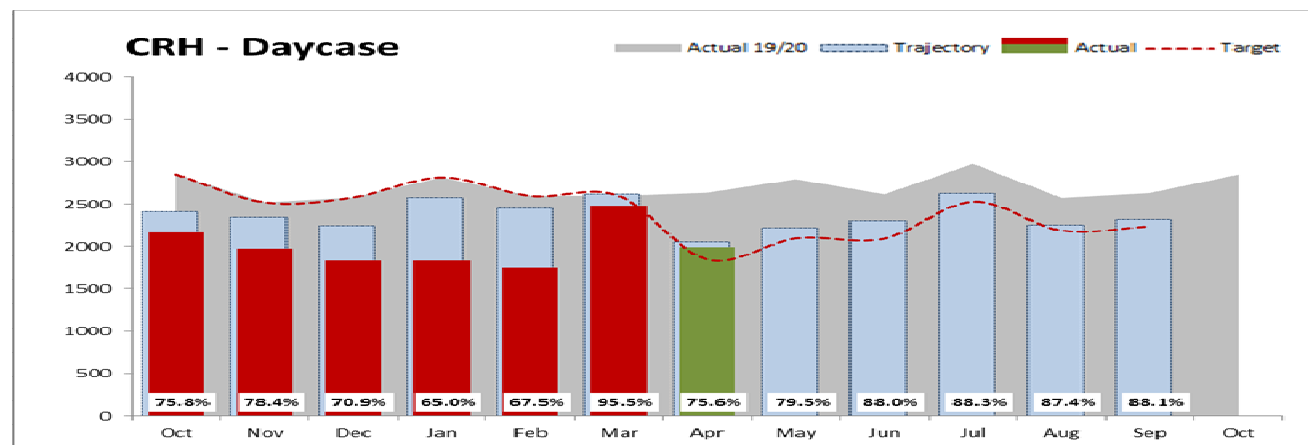
All Elective	Apr-21	May-21	Jun-21	Jul-21	Aug-21	Sep-21
Target	70%	75%	80%	85%	85%	85%
Trajectory	75%	75%	88%	78%	85%	86%
Actual	80%	79%				



Elective IP	Apr-21	May-21	Jun-21	Jul-21	Aug-21	Sep-21
Target	70%	75%	80%	85%	85%	85%
Trajectory	68%	69%	81%	77%	80%	87%
Actual	68%	76%				

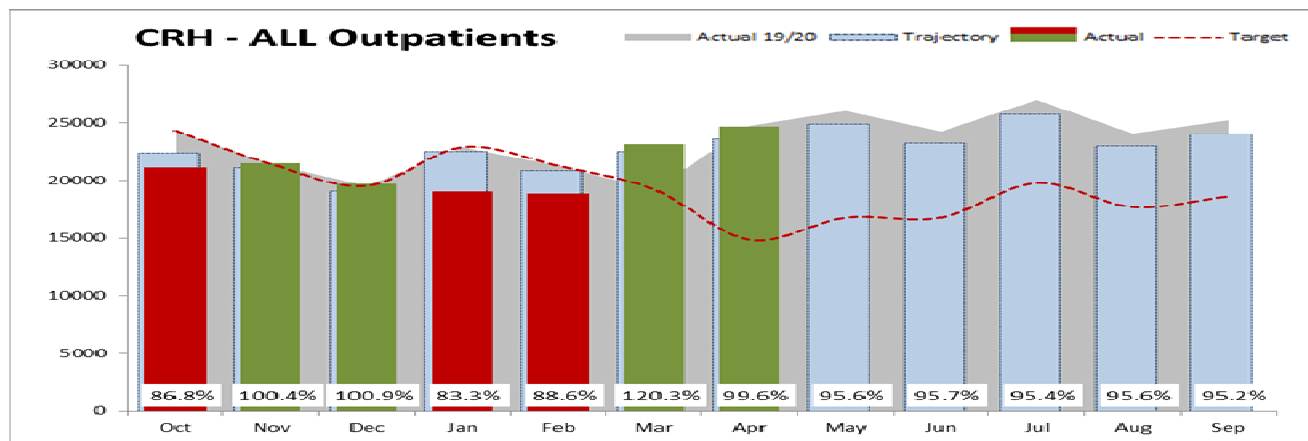
# Current Plan

## CRH Elective Recovery



Daycase position is 5.6% above target and 2.4% below the trajectory for April 2021

DAYCASE ELECTIVE	Apr-21	May-21	Jun-21	Jul-21	Aug-21	Sep-21
Target	70.0%	75.0%	80.0%	85.0%	85.0%	85.0%
Trajectory	78.0%	79.5%	88.0%	88.3%	87.4%	88.1%
Actual (vs Trajectory)	75.6%					
Variance (Actual vs Target)	5.6%					



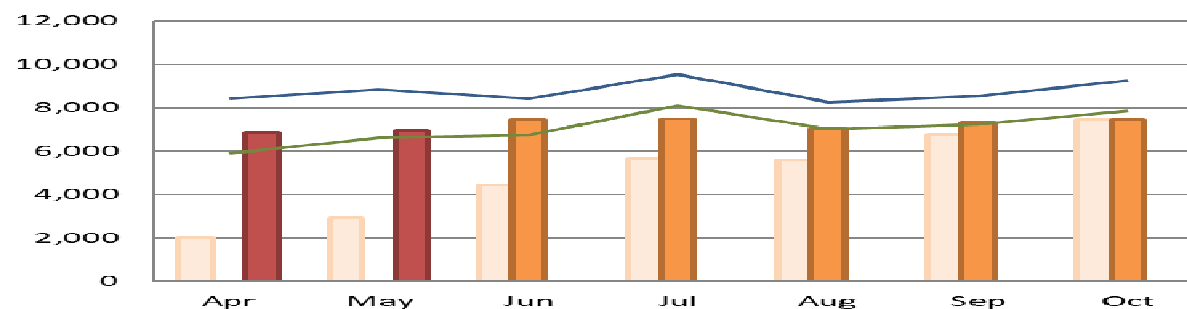
All Outpatient position is 29.6% above target and 4.3% above the trajectory for April 2021

ALL OUTPATIENTS	Apr-21	May-21	Jun-21	Jul-21	Aug-21	Sep-21
Target	70.0%	75.0%	80.0%	85.0%	85.0%	85.0%
Trajectory	95.3%	95.6%	95.7%	95.4%	95.6%	95.2%
Actual (vs Trajectory)	99.6%					
Variance (Actual vs Target)	29.6%					

# Current Plan

## UHDB Elective Recovery

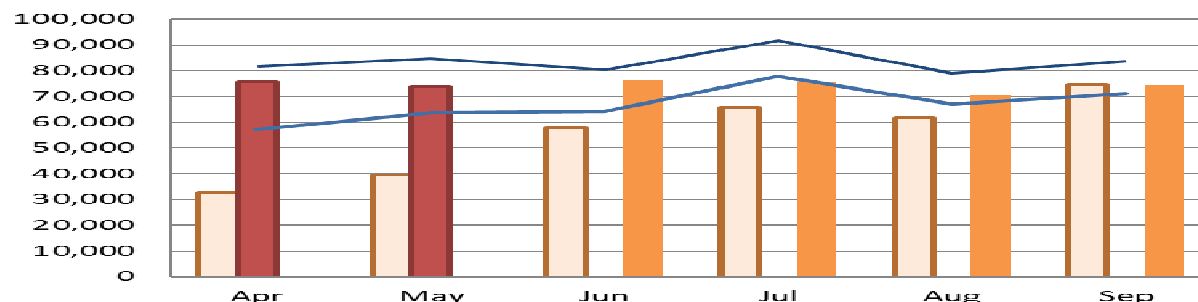
Elective admissions - Daycase



20/21 Actual 21/22 FOT Current Month 21/22 Actual 19/20 Actual FRT Threshold

Elective DC	Apr-21	May-21	Jun-21	Jul-21	Aug-21	Sep-21
Target	70%	75%	80%	85%	85%	85%
Trajectory	76%	76%	89%	78%	85%	86%
Actual	81%	79%				

All Outpatients



20/21 Actual 21/22 FOT Current Month 21/22 Actual 19/20 Actual FRT Threshold

Elective DC	Apr-21	May-21	Jun-21	Jul-21	Aug-21	Sep-21
Target	70%	75%	80%	85%	85%	85%
Trajectory	89%	81%	95%	83%	89%	89%
Actual	93%	87%				



## WAITING LIST REPORT

The average waiting time for **New Patients** in 2020 was **18.5 Weeks**; **Follow-up** patients **37.3 Weeks**; and patients waiting for **Elective Surgery** was **9 Weeks**.

The highest number of waiters for New patients was in Ophthalmology; Follow-up patients Ophthalmology; and for Elective Surgery - Orthopaedics.

Joined Up Care  
Derbyshire

## THEN Pre-COVID

Number of patients on the waiting list in: **February 2020**

**12,031** New

**73,771** Follow-up

**3,272** Inpatient/Daycase



Top 5 specialties for each waiting list in: **February 2020**

Speciality	New Patients Waiting
Ophthalmology	1011
Ear Nose & Throat	970
Dermatology	871
Colorectal Surgery	680
Cardiology	677

Speciality	Follow up Patients Waiting
Ophthalmology	9691
Urology	4912
Dermatology	4823
Gynaecology	3844
Ear Nose & Throat	3586

Specialty	Inpatients waiting
Trauma & Orthopaedics	211
Gynaecology	111
General Surgery	93
Urology	60
Ear Nose & Throat	48

Specialty	Daycase waiting
Gastroenterology	430
Ophthalmology	414
Trauma & Orthopaedics	337
General Surgery	290
Dermatology	230

## WAITING LIST REPORT

The average waiting time for **New Patients** in 2021 is **11.8 Weeks**; **Follow-up** patients **39.4 Weeks**; and patients waiting for **Elective Surgery** is **26 Weeks**.

The highest number of waiters for New patients is in Ophthalmology; Follow-up patients Ophthalmology; and for Elective Surgery Orthopaedics.

Joined Up Care  
Derbyshire

## NOW Post-COVID

Number of patients on the waiting list in: **May 2021**

**11,870** New

**89,665** Follow-up

**4,849** Inpatient/Daycase



Top 5 specialties for each waiting list in: **May 2021**

Speciality	New Patients Waiting
Ophthalmology	1132
Dermatology	820
Colorectal Surgery	736
Ear Nose & Throat	626
Gastroenterology	591

Speciality	Follow up Patients Waiting
Ophthalmology	10961
Dermatology	6145
Urology	5879
Gynaecology	5034
Orthopaedics	3977

Specialty	Inpatients waiting
Trauma & Orthopaedics	548
Gynaecology	189
General Surgery	188
Ear Nose & Throat	97
Urology	73

Specialty	Daycases waiting
Trauma & Orthopaedics	732
Gastroenterology	700
General Surgery	607
Ear Nose & Throat	341
Gynaecology	331

## WAITING LIST REPORT

The average waiting time for **New Patients** in 2020 was **12 Weeks**; and patients waiting for **Elective Surgery** was **15 Weeks**.

The highest number of waiters for New patients was in Ophthalmology; Follow-up patients Ophthalmology; and for Elective Surgery - Orthopaedics.

## THEN *Pre-COVID*

Number of patients on the waiting list in: *February 2020*

**39,465** New

**164,297** Follow-up

**15,368** Inpatient/Daycase



Top 5 specialties for each waiting list in: *February 2020*

Specialty	Avg Wait	New Patients Waiting
Ophthalmology	12	4629
Dermatology	12	2916
ENT	7	2912
Cardiology	11	1850
Gynaecology	6	1798

Specialty	Follow Up Patients Waiting
Ophthalmology	24,205
Trauma and Orthopaedics	16,012
Rheumatology	11,680
Cardiology	11,326
Urology	8,117

Specialty	Avg_Wait	Inpatients Waiting
Trauma and Orthopaedics	19	2150
Spinal Surgery Service	18	323
General Surgery	18	292
Upper Gastrointestinal Surgery	24	228
Gynaecology	14	204

Specilaty	Avg_Wait	Daycases Waiting
Ophthalmology	15	2178
Trauma and Orthopaedics	15	1489
General Surgery	13	1295
Gastroenterology	6	814
Spinal Surgery Service	17	738

## WAITING LIST REPORT

The average waiting time for **New Patients** in 2021 is **21 Weeks** and patients waiting for **Elective Surgery** is **38 Weeks**.

The highest number of waiters for New patients is in Ophthalmology; Follow-up patients Ophthalmology; and for Elective Surgery Orthopaedics.

Joined Up Care  
Derbyshire

**NOW** *Post-COVID*

Number of patients on the waiting list in: *May 2021*

**41,742** New

**174,087** Follow-up

**20,689** Inpatient/Daycase



Top 5 specialties for each waiting list in: *May 2021*

Treatment_Function	Avg Wait	New Patients Waiting
Ophthalmology	24	6825
ENT	22	3325
Dermatology	16	2469
Gynaecology	14	2282
Trauma and Orthopaedics	14	1963

Specialty	Follow Up Patients Waiting
Ophthalmology	30,994
Trauma and Orthopaedics	15,443
Rheumatology	13,240
Cardiology	10,044
Urology	8,253

Specialty	Avg_Wait	Inpatients Waiting
Trauma and Orthopaedics	45	2525
General Surgery	43	623
Upper Gastrointestinal Surgery	49	423
Spinal Surgery Service	46	387
Urology	33	353

Specialty	Avg_Wait	Daycases Waiting
Ophthalmology	34	2515
Trauma and Orthopaedics	40	2310
General Surgery	38	1531
Hand Surgery	36	1284
Spinal Surgery Service	47	926

# Summary

- Our plans remain on track for the surgical backlogs of priority 2 patients (those requiring surgery within one month) to be restored to normal levels by the end of the month.
- We have established plans to recover surgical backlogs for priority 3 patients (those requiring surgery within three months) to be restored to normal levels by the end of September 2021
- We are maintaining ongoing clinical review of all patients on the waiting list over three months to review priority and identify any deterioration
- We are maintaining detailed speciality level recovery plans for our services and working collaboratively to equalise waiting lists and maximise use of available capacity across the system
- We continue to focus on management of referrals which will support us in recovering the backlog, for example use of “Advice & Guidance”

# Thank you

